



US Army Corps
of Engineers
St. Louis District

Information Paper

O'Fallon Wastewater Treatment Plant, IL

Implementation (CAP Section 14)

Contact:

Charles Davis, Project Manager

(314) 320-9677

Charles.S.Davis@usace.army.mil

Location: The project is located along the Silver Creek in O'Fallon, Illinois, approximately 25 miles east of St. Louis, Missouri.

Description: The O'Fallon Wastewater Treatment Plant (WWTP) is currently experiencing bank erosion along Silver Creek which is threatening the municipal wastewater treatment lagoon. The City of O'Fallon has requested assistance from the St. Louis District to evaluate bank protection options. Currently, approximately 760 linear feet of bank line along the Silver Creek has experienced erosion due to flood and storm damages.

Status: The Final Feasibility Study Report has been approved by the District Commander. The report recommends construction of 760 linear feet of stone protection along Silver Creek to protect the sewage treatment lagoon.

Importance: With project funding, bank protection would be implemented to protect public infrastructure that provides essential public services from flood and storm damages due to erosion.

Authority: Section 14 of Flood Control Act of 1946 (PL 79-526), as amended.

Schedule:

- Final Feasibility Study Report: 8 August 2023
- Project Partnership Agreement (PPA) Execution: April 2024

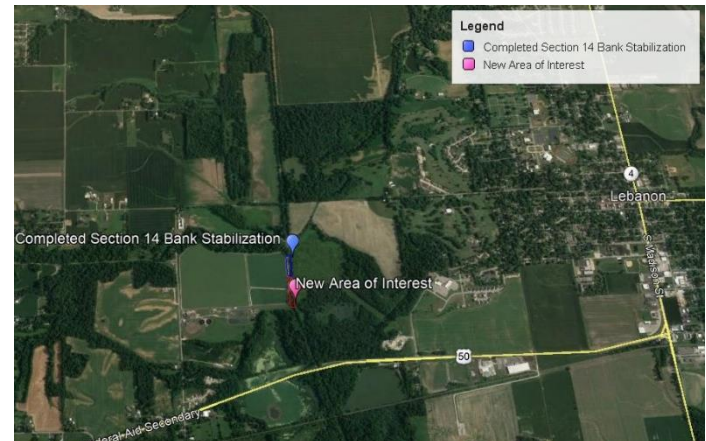


Figure 1: Initial 500 feet of bank stabilization completed in 2004. New area of concern is 760-feet long

Activities for FY24: PPA execution and initiation of Design and Implementation Phase when federal funding is received.

Activities after FY24: Construction of the proposed solution.

Project Sponsor/Customer: The City of O'Fallon, Illinois.

Congressional Interest: Senate: Durbin & Duckworth
House: Bost (IL-12)

Financial (Implementation*):

Estimated Federal cost: \$753,000

Estimated Non-Federal cost: \$406,000

Total estimated cost: \$1,159,000

Total Federal funding to date: \$100,000

*Estimated Project Cost for Design and Construction